

THE HUB The Rotary Club of Park Cities



Leaders united worldwide to provide humanitarian service, encourage high ethical standards in all vocations, and help build goodwill and peace in the world.

**Service
Above
Self**

July 11, 2008

TODAY'S PROGRAM

Program Chair of the Day: Ley Waggoner



Frederick E. "Shad" Rowe

Investors for Director Accountability/ Michael J. Fox Foundation

Fast Facts:

- Co-founder of the Great Investors' Best Ideas Foundation
- Former Chairman of the Texas Pension Review Board
- Member - Executive Committee of Texans for Lawsuit Reform
- President of the Investors for Director Accountability

Frederick E. "Shad" Rowe is General Partner of Greenbrier Partners, Ltd., a private partnership which invests in publicly traded securities. Greenbrier Partners has produced above market returns since its inception in 1985. Since 1978, Mr. Rowe has served as President of Rowe & Company, Inc.

Before forming Rowe & Co., Mr. Rowe worked as Corporate Syndicate Manager and Vice President with Schneider, Bernet &

Hickman, Inc. Investment Bankers and as an Institutional Securities Salesman with Wood, Struthers and Winthrop. Prior to receiving his MBA from The University of Texas at Austin, Mr. Rowe served in active duty as a Junior Officer in the United States Navy.

Mr. Rowe serves as co-founder of the Great Investors' Best Ideas Foundation, member of the Executive Committee of Texans for Lawsuit Reform, President of the Investors for Director Ac-

countability Foundation and he is a board member of the Michael J. Fox Foundation for Parkinson's Research. He has been Chairman of the Texas Pension Review Board, Mr. Rowe's articles have appeared in *Forbes*, *Fortune*, *The American Banker*, *Southpoint*, *Texas Monthly*, *D Magazine* and *Grant's Interest Rate Observer*. He is frequently interviewed by CNBC, *The New York Times*, *The Wall Street Journal* and *The Dallas Morning News*.

July 4th Parade

Chairs: J. Kearney, R. Washburn
Photographer: Jim Lilly

Grand Marshall

George Patterson, member of RCPC for nearly 29 years, was honored yet again. After the RCPC sponsored Park Cities 4th of July Parade, he was recognized as the 2008 parade **Grand Marshal** by State Rep. Dan Branch.

DG Showalter

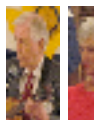
God Bless America!

LAST WEEK

Presiding: **Linda Tunnell**
 Invocation: **Jodie Ray**
 Pledge/Song Leader: **Rod Pirtle**
 Introductions: **Roger Hogarth**
 Sgt-at-Arms: **George Keeling**
 Photographer: **Kendall Laughlin**
 Program: **Installation of Officers**
 Speakers: **Linda Tunnell, Karl von Bieberstein, Ley Waggoner**



President **Linda Tunnell** called her last official Rotary meeting to order. Soon-to-be President **Ley Waggoner's** granddaughters **McKinney** and **Lynley** led The Pledge of Allegiance. **Rod Pirtle** led us



in singing "God Bless America," accompanied by his wife **Beth** interpreting it into sign language for the deaf.



Retiring Sgt-at-Arms **George Keeling** received two checks for the RCPC Foundation none the less. Shakedowns will not be the same without George!



PP **Karl Von Bieberstein** officiated at the installation of Offi-

cers and Directors for the 2008-09 Rotary Year.

Incoming President **Ley** presented Linda with a gift wrapped in authentic Harry Winston wrapping! Presidential pins were exchanged. **Ley** thanked **Linda** for her stellar year and thanked every-



one for all the work that enabled the accomplishments of 2007-08. **Ley** spoke of his belief that each of us makes a difference one person at a time. He believes that a good way to encourage service is to be open to multiple ways of sharing. District 5810's **DG L.B. Showalter** has challenged all the clubs to propose a new program to serve others, with a prize of \$100,000 to fund the winner. **Ley** reminded us that Rotary does more good around the world than most governments. He spoke of his enthusiasm and plans for the coming year and there were congratulations and smiles all around!



Congratulations to EACH of You!

Make Dreams Real
 Make A Difference

COMMITTEE TIME continued



Award Winners



Rep. Dan Branch



Congressman Pete Sessions



July 11, 2008 - Page 2

THE HUB

Newsletter of the
 Rotary Club of Park Cities (Dallas)
 Betty Dawson, *Editor*

Shutterbug Committee
 Jim Lilly, *Chair*

Bulletin/Internet Advertising
 K. Lonergan, M. Darnell, *Co-Chairs*

ROTARY CLUB

DALLAS TEXAS

PARK CITIES

OFFICERS and DIRECTORS 2008-2009

Ley Waggoner, President
Phillip Bankhead, President Elect
Rick Amsberry, Vice President
Jeff Pirkle, Treasurer
Eric Heitkamp, Secretary
Mike Kelly, Sgt. at Arms
Cleve Clinton, Club Service I
Charlotte Hudgin, Club Service II
Dennis Devenport, Community Service I
Fred Brown, Community Service II
Leslie Martin-Hope, Vocational Service
Fred Speno, International Service
John Glancy, At Large
Linda Tunnell, Immediate Past President
Ben Young, Parliamentarian
Jodie Ray, Historian
Laurie Aldredge, Club Administrator

7557 Rambler Rd., Suite 700
 Dallas, Texas 75231

Office Phone: 214-739-4170

Office Fax: 214-739-2130

www.parkcitiesrotary.org

Email: club@parkcitiesrotary.org



Dong Kurn Lee, Seoul, Korea
 President, Rotary International
www.rotary.org

L.B. Showalter, Plano
 Governor, District 5810
www.rotary5810.org

UPCOMING PROGRAMS

July 11, 2008 - Page 3



July 18 Brad Sham
Cowboys Update



July 25 New Members



August 1 Sharron Griggsby
Dallas North and South



August 8 L.B. Showalter
District Governor Update

CLUB ANNOUNCEMENTS

Congratulations to George Patterson!
Read the article "Administrator Leaves Town in the Black" in the June 27th *Park Cities People* at www.peoplenewspapers.com.

Congratulations to Cathy Bryce! Recently retired from HPISD, she has been elected as the 2008-10 Board President of the YWCA of Metropolitan Dallas. See the Jul 4th issue of *Park Cities People* at www.peoplenewspapers.com.

Blood Drive! July 19 at NorthPark!
Volunteers and Donors needed! **Sign up today!**

Grant Requests Deadline The next deadline to submit grant requests to the Rotary Club of Park Cities Foundation is July 15th. The Executive Committee of the Foundation meets quarterly. Requests should be submitted to Ms. Kelly Donohue at the Communities Foundation of Texas. For forms contact her 214.750-4234 or kdonohue@cftexas.org.

Under New Management Please send information for *The Hub* by Mon. pm or Tues. am to bedawson@swbell.net or fax to 214.691.6373.



Many Thanks, Mike!
You'll be missed!

THOUGHTS ON . . .

Investing

Never invest in anything that eats or needs repairing.

~ Billy Rose

Nothing hurts worse than the loss of money.

~ Livy

The best investment is in the tools of one's own trade.

~ Benjamin Franklin

Rule No. 1: Never lose money. Rule No. 2: Never forget Rule No. 1.

~ Warren Buffett

The best investment opportunities [arise] when you are broke.

~ Firestone's Principle of Investment Timing

Buy low, sell high.

~ Wall Street Axiom

ANNOUNCEMENTS FROM ROTARY INTERNATIONAL

Upgrades to Member Access

In July 2008, Rotary International will implement a more comprehensive registration and login process for [Member Access](#) and other password-protected online services. The new system will improve security and provide self-service features.

When the new system is fully implemented, all registered users will be able to reset their passwords and update their e-mail addresses. The new system allows RI to increase and improve secure online content and service to non-Rotarian constituents.

Starting July 2008, **both new and existing users will be required to**

register, or re-register, with a unique e-mail address, password, and a secret question and answer.

If you use spam blocking software, add **secure@rotarymailings.org** to your approved sender list. This will ensure that you receive emails that support the new self-service features.

Reminder Regarding Unsolicited Emails - New Scams Abound!

Rotary International does not solicit funds through email, nor does it ask that personal information be updated by e-mail or other electronic means.



THEY PROFIT MOST WHO LAUGH BEST

How many narcissists does it take to change a light bulb?

One. He holds the bulb while the world revolves around him.

How many bluegrass musicians does it take to change a light bulb?
Four. One to change the bulb and three to complain it's electric.

How many communists does it take to change a light bulb?

None. The light bulb contains the seeds of its own revolution.

Have a **joke too good** to keep to yourself? Email it to *The Hub*!
bedawson@swbell.net

FOUNDATION FUNDERS

Our Funders for **Next Week** are

Jina McDaniel
E.G. McMillan
Doug McNair
Doug Means

Happy Birthday!

Jina McDaniel 7.2
Karen Farris 7.5
Jerry Washam 7.9
Leroy Howard 7.10

Hank Gaines 7.15
Charlie Bond 7.17
Marshall Weaver 7.17



CNC HOME CARE

(214) 540-5942
Established in 1994

Assisted Aging • Home Management • Social Activities

CHRISTIAN F. CHAUSEN, MBA, CMC, RG-NGF
ADMINISTRATOR

8111 Preston Road, Suite 415
Dallas, Texas 75225



Park Cities Dental Associates

3110 Webb Avenue
Suite 300
Dallas, Texas 75205
214-528-7870

Roy S. Washburn, D.D.S., F.A.G.D.
Philip E. Lindley, D.D.S.



From Our Factory to You
for Over 40 Years

ALAN WINN Corporate Counsel

2800 McCree Road
Garland, TX 75041
P.O. Box 462089
Garland, TX 75046
(800) 950-0321
Direct (972) 864-7326
FAX (972) 864-7312
e-mail:
arwinn@morganusa.com



VIRGINIA
COOK
REALTORS

Greg Pape

Broker Associate
Park Cities Office
5950 Sherry Lane, Suite 110
Dallas, Texas 75225
214.696.8877
Cell: 214.546.4066
Voicemail: 972.380.7885
Fax: 214.691.7779
gregpape@att.net



Quality Fence Company

8605 Sovereign Row
Dallas, Texas 75247
Wood Decks Overhead Structure
Wood Benches
All Types of Wood Fences
Chain Link

CHARLIE POLLAN
972-239-7201



Kathleen & Robert Ellington
4424 Lovers Lane • University Park, Texas 75225
214-691-2355



Bill Neathery

NEATHERY
ELECTRIC
Security Cameras
Home Theater
Computer/Data Services
Electrical & Lighting

www.neatheryelectric.com
214-691-8844



UP&OPEN IMAGING™
The Stand-Up™ MRI

1360 W. Campbell Rd., Suite 122 • Richardson, TX 75080
Ph: 972-479-9500 • Fax 972-479-9544
4144 N. Central Expressway, Suite 160 • Dallas, TX 75204
Ph: 214-828-1115 • 214-828-9590
www.upandopenimaging.com

Rob Banes, CPA

WAGNER, EUBANK & NICHOLS, L.L.P.
Certified Public Accountants

The Berkshire at Preston Center
5950 Berkshire Lane, Suite 300
Dallas, Texas 75225
Ph: (214) 692-6800
Fax: (214) 692-7844
rbanes@wencpa.com



E-mail: srothacker@uniqueac.com
Web site: www.uniqueac.com

STEVE ROTHACKER

Phone: (214) 328-4189
Fax: (214) 328-0585
Cell: (214) 876-1250
1510 Stevens St. / Dallas, Texas 75218
TNCIA001398C

WILLIAM L. SIEGEL
RICHARD BARRETT-CUETARA
ATTORNEYS AT LAW

COWLES & THOMPSON
A PROFESSIONAL CORPORATION

901 Main Street, Suite 4000
Dallas, Texas 75202
TEL 214.672.2000 FAX 214.672.2020

J. Marshall Weaver

CANNON
DEVELOPMENT, Z

4440 Sigma Road, Suite 101
Dallas, Texas 75244
(972) 239-1060
Fax (972) 934-8694
mweaver@cannoninc.net

FUGRO CONSULTANTS, INC.



2880 Virgo Lane
Dallas, Texas 75229
Phone: 972-484-8301
Fax: 972-620-7328
Email: rpatton@fugro.com

ROBERT S. PATTON, P.E.
Senior Consultant



ROACH HOWARD
SMITH & BARTON
...an Assurex Global Partner

Karen K. Farris, CPCU, ARM
President & CEO
kfarris@rhsb.com

Leroy Howard
Founder
lhoward@rhsb.com

8750 N Central Expressway Suite 500 Dallas, Texas 75231-6458
972-744-2701 Fax 972-231-1368 www.rhsb.com



Dennis Devenport
972.644.7676

www.astro-graphics.com

PRINTING
PUBLISHING
ADVERTISING
GRAPHIC DESIGN

neighborhood dining at its best
in Snider Plaza
Amore Italian
Peggy Sue BBQ
Cisco Grill
Marc and Susan Hall

A tradition of fine construction for over 25 years
New Homes • Renovations • Remodeling

Doug Means
214-363-9798

**ELLIOTT'S
HARDWARE**
Making hardware easy.

DALLAS Plano Mesquite
Maple at Motor Colt at W. Park Kearney at Galloway
214-634-9900 972-312-0700 214-324-5067

NOW OPEN WEEKDAYS 8-8 • SATURDAY 9-5
Visit anytime at elliottshardware.com

We Gratefully Acknowledge

Rob Banes, CPA

WAGNER, EUBANK & NICHOLS, L.L.P.
Certified Public Accountants

The Berkshire at Preston Center
5950 Berkshire Lane, Suite 300
Dallas, Texas 75225
Ph: (214) 692-6800
Fax: (214) 692-7844
rbanes@wencpa.com

for Supporting The Hub



SLEEPER SEWELL
Insurance Agents and Risk Managers
www.sleepersewell.com

972.419.7500

William E. Sleeper, President

RLG

RAYMOND L. GOODSON JR., INC.
CONSULTING ENGINEERS

David M. Goodson, P.E.
Stuart A. Markussen, P.E., R.P.L.S.

Suite 300, LB 17 • 5445 La Sierra • Dallas, Texas 75231-4138
214/739-8100 • Fax 214/739-6354

LandAmerica
Commonwealth Title

J. SCOTT SARGENT
Managing Director

Patriot Office
One Preston Centre
8222 Douglas Avenue, Suite 430
Dallas, TX 75225
phone: 214-265-7979 fax: 214-265-8109
mobile: 214-683-6419
e-mail: sargejs@swbell.net



COMMUNITIES
FOUNDATION
of TEXAS

*Bringing visionary philanthropists
and worthy causes together*

5500 CARUTH HAVEN LANE • DALLAS, TEXAS 75225
(214) 750-4222 • www.cftexas.org

ENTRUST CAPITAL ADVISORS

— Sellers Representation, Mergers & Acquisitions —

Dr. L. Nolan Duck, CBI
Partner

2425 N. Central Expressway, Suite 200 • Richardson, Texas 75080
Office 972.664.0400 • Cell 972.358.0321 • Fax 972.664.0401
NolanDuck@EntrustCap.com • www.EntrustCap.com



John Robertson
Sales Executive

Sales Center
Classic Residence by Hyatt
2727 Routh Street
Dallas, TX 75201

Telephone (214) 826-1234
JRobertson@hyattclassic.com
www.3000turtlecreek.com

Dr. Jack B. Marx

Therapeutic Optometrist

Examination & Treatment of Eye Disease
Eye Exams & Contact Lenses
Treatment of Red Eyes & Infections
LASIK & PRK Laser Evaluations

3302 N. Buckner Blvd., Suite 111
Dallas, Texas 75228

214-324-1100

Bob Dill

dd + 1.469.232.3824 c + 1.214.533.0939
e Bob_Dill@haygroup.com

Hay Group, Inc.
Suite 800 West | 5001 Spring Valley Road
Dallas, TX 75244-3190 | USA
t + 1.469.232.3800 | f + 1.469.232.3888
www.haygroup.com

HayGroup®

HIERSCHE HAYWARD DRAKELEY URBACH

DREW N. BAGOT

Attorney at Law

15303 Dallas Parkway, Suite 700

Addison, Texas 75001

Phone: 972.701.7000 • Fax: 972.701.8765 • www.hhdulaw.com

Rob Eggemeyer, CPA, MBA
Vice President
Commercial Banking



Compass Bank

6501 Hillcrest Ave.
Dallas, TX 75205
214-346-6169 / Fax 214-526-1131
Cell 214-532-5225
robert.eggemeyer@compassbank.com

**Thank You, for supporting the
Rotary Club of Park Cities.**

THE HUB The Rotary Club of Park Cities



www.parkcitiesrotary.org

Service
Above
Self

Leaders united worldwide to provide humanitarian service, encourage high ethical standards in all vocations, and help build goodwill and peace in the world.

July 18, 2008

TODAY'S PROGRAM

Program Chair of the Day: Hal Copeland



Brad Sham

★ Cowboys Update ★

Fast Facts:

- Long-time local Broadcaster
- Voice of the Dallas Cowboys
- Named ten times Texas Sports-caster of the Year
- Elected to the Texas Radio Hall of Fame
- Frank Glier Award, 1995
- 8 Katie Awards
- 29 yrs. as Cowboys Broadcaster

Brad Sham, known as “the voice of the Dallas Cowboys,” begins his 30th season broadcasting Cowboys’ games this fall. His thirty-eight year broadcasting career includes numerous Cotton Bowl Classics, NCAA basketball and football as well as NFL games, and the 1998 Nagano Winter Olympic Games for CBS radio.

His many television assignments have included FC Dallas and Major League Soccer, the NFL on CBS and Fox, NASCAR on DirecTV,

Arena League football, and the NFL Europe League for Fox Sports Net, and college basketball for ESPN Regional.

In 2003 Brad wrote a book of his favorite Cowboys stories entitled *Stadium Stories: The Dallas Cowboys*.

A 1970 graduate of the U. of Missouri with a Bachelor of Journalism, Brad has won eight Katie Awards from the Press Club of Dallas and has been named Texas Sportscaster of the Year ten times by the

National Sportswriters Association. He was an inaugural inductee in the Texas Radio Hall of Fame in 2002.

When not in the broadcast booth, Brad serves on the board of directors of the Cotton Bowl and the board of trustees of the Texas Sports Hall of Fame.



AROUND OUR ROTARY WORLD



Meet Rotary International's New President Dong Kurn Lee of Seoul

Text of the beginning of President Lee's address to the 2008 RI Convention:

There are certain moments in our lives that are filled with such joy that we wish we could hold on to them forever. Standing here, at this Rotary convention, speaking to all of you, is one of those moments.

In my many years as a Rotarian, I have seen how Rotary changes lives. All over the world, Rotary means hope. It means health and literacy. It means honesty and fellowship. It means the courage to make things better. All over the world, there are people whose lives are different, whose lives have been touched, and transformed, because of Rotary. But as much as Rotary service changes the lives of others, it changes our own lives more.

Rotary changes who we are because it changes how we see ourselves and the world. We do not only see how things are now, but how they might be. We see potential, and we see

possibility. Together, our abilities are stronger. Together, we really can make a lasting difference on a global scale. Together, there is no limit to what we can accomplish.

But when we truly understand the power that we have through Rotary, we must also understand that this kind of potential brings a responsibility: the responsibility to do the most good we can and to inspire other Rotarians to do the same.

How can we do the most good that we can? We do it by keeping our clubs strong, by bringing in new members and making sure that all of our members are serving well. We do it by giving to our Foundation, so that we have the resources to support projects around the world. And in the coming Rotary year, we will do it by coming together to succeed in our \$100 million challenge. This challenge is a promise we have made, as part of our promise to eradicate polio. And I will quote President Wilf when I say, “We Rotarians keep our promises.”

Every project we take on in Rotary is a promise we must keep, which is why it is so important to choose our projects carefully. Our choices are not always easy or obvious. They are not simple questions of right or wrong. (Continued on page 3)

LAST WEEK

Presiding: **Ley Waggoner**
 Invocation: **Dick Orrock**
 Pledge/Song Leader: **Charlotte Kroeker**
 Introductions: **Nolan Duck**
 Sgt-at-Arms: **Mike Kelley**
 Photographer: **Jim Lilly**
 Chair of the Day: **Ley Waggoner**
 Speaker: **Frederick E. "Shad" Rowe**

President **Ley Waggoner** called this first official meeting of the new Rotary year to order. **Dick Orrock** reported that we had no members who were ill, but did spark a small controversy about the date of the Confederate loss at Gettysburg, mentioned because of its importance in securing our Union. **Charlotte Kroeker** led us in singing "Oh, Beautiful for Spacious Skies." **Nolan Duck** recognized a long-distance Visiting Rotarian from California. The club seemed to be breaking in our new Sgt-at-Arms **Mike Kelley** by making his job difficult. President **Ley** reported that the club had had a record year in 2007-08 with ninety-two sustaining members to The Rotary Foundation.

Roy Washburn reported on the success of the July 4th Parade. He noted that we had the best participation among our members this year. He thanked all the core leaders who were crucial in its organization and success. **Mike Jarrell** presented the new Membership Brochure.

President **Ley** thanked **Jim Hampton**

of Ben Bridge Jewelers for donating the diamond for the President's pin. The District Governor's Report is available on the Website. President **Ley** thanked **Dennis Harrison** for his work on the attendance scanner and **Dennis Devenport** for printing the Roster.

President **Ley** introduced today's speaker **Shad Rowe**, investor and president of Investors for Director Accountability. He quoted John Shad, who said you spend the first third of your life learning, the second third earning, and the last third serving, although **Shad** believes that you can do them all simultaneously. He is also involved in the Michael J. Fox Foundation which has changed the way scientific research is done by forcing researchers to share information. He has observed that when bad professional behavior is anonymous nobody seems to care. His organization, Investors for Director Accountability, removes the anonymity from business executives and reports bad behavior. He noted that in a society having difficulty, if everybody does not do their jobs, they all die; but in a prosperous society, people start finding ways to feather their own nests, and may do things through anonymous groups they would never do to their friends. He believes that the answer is to set standards, not rules, because people get around the rules. He believes that working together people can improve the way business is done.



PDG Milton Kessel
 is joining us!

Milton is a Rotarian
 Extraordinaire with 49
 years of Rotary service!

Welcome to RCPC!

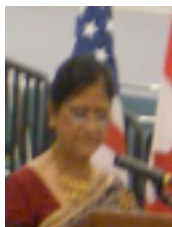
Due to technical difficulties,
 pictures will return next week.



**Make Dreams Real
 Make A Difference**

RI CONVENTION 2008

From the Convention Album of Jan and Ley Waggoner



RI Convention Interfaith Service Readings

Date: June 15, 2008
 During the Interfaith Service
 there were readings from
 Islam, Judaism, Hinduism,
 Christianity and Buddhism.



Hats From Around the World

Date: June 16, 2008
 Jan and Ley
 Waggoner try on
 hats from the Middle
 East.

July 18, 2008 - Page 2

THE HUB

Newsletter of the
 Rotary Club of Park Cities (Dallas)
 Betty Dawson, *Editor*
 Shutterbug Committee
 Jim Lilly, *Chair*
 Bulletin/Internet Advertising
 K. Lonergan, M. Darnell, *Co-Chairs*

ROTARY CLUB

DALLAS TEXAS

PARK CITIES

OFFICERS and DIRECTORS 2008-2009

Ley Waggoner, President
Phillip Bankhead, President Elect
Rick Amsberry, Vice President
Pam Carvey, Treasurer
Eric Heitkamp, Secretary
Mike Kelly, Sgt. at Arms
Cleve Clinton, Club Service I
Charlotte Hudgin, Club Service II
Dennis Devenport,
Community Service I
Fred Brown,
Community Service II
Leslie Martin, Vocational Service
Fred Speno, International Service
John Glancy, At Large
Linda Tunnell,
Immediate Past President
Ben Young, Parliamentary
Jodie Ray, Historian
Laurie Aldredge,
Club Administrator

7557 Rambler Rd., Suite 700
 Dallas, Texas 75231
 Office Phone: 214-739-4170
 Office Fax: 214-739-2130
 www.parkcitiesrotary.org
 Email: club@parkcitiesrotary.org



Dong Kurn Lee, Seoul, Korea
President, Rotary International
 www.rotary.org

L.B. Showalter, Plano
Governor, District 5810
 www.rotary5810.org

UPCOMING PROGRAMS

July 18, 2008 - Page 3



July 25 New Members



August 1 Sharon Grigsby
"Dallas North and South"



August 8 L.B. Showalter
"District Governor Update"



August 15 Marques Hayes
"Basketball and Life"

CLUB ANNOUNCEMENTS

Dues Are Due! Give your checks to Laurie, or use the RCPC Website's new secure Online Payment Center.

Dist Membership Seminar July 19, 8 am -12:30 at Plano Chamber of Commerce. **All invited to attend!**

Blood Drive Tomorrow at North Park! It's **not too late** to volunteer!

Change of Treasurer Due to the demands of his new job, Jeff Pirkel has had to resign as Treasurer. **Thanks to Pam Carvey** for taking on the job!

Ronald McDonald House July 21. For info see Fred Brown.

Under New Management Please send information for **The Hub** by Mon. pm or Tues. am to bedawson@swbell.net or fax to 214.691.6373.

THOUGHTS ON . . .

Football

The way you motivate a football team is to eliminate the unmotivated ones.

~ Lou Holtz

Football isn't a contact sport; it's a collision sport. Dancing is a contact sport.

~ Vince Lombardi

You can only really yell at the players you trust.

~ Bill Parcells

Pro football is like nuclear warfare. There are no winners, only survivors.

~ Frank Gifford

When you win, nothing hurts.

~ Joe Namath

Football combines the two worst features of American life. It is violence punctuated by committee meetings.

~ George F. Will

AROUND OUR ROTARY WORLD *continued*

(Presidential Address continued)

They are complicated questions of who needs our help the most and whom we can help the best. This is why, every year, it is the job of a Rotary president to choose his emphases, to help guide the service of Rotarians in the coming Rotary year. It is one of the biggest decisions a Rotary president makes. And it was one that I spent many months considering.

I thought carefully about the emphases of past presidents and looked at some of the many projects that these emphases had inspired. Water, health and hunger, and literacy – these are the categories of Rotary service that have endured now for several years, and with good reason. These are the areas in which local Rotary clubs, working individually and in coop-

eration with other clubs, can do the most good.

They are areas in which we now have many years' experience and expertise. They are areas of wise Rotary investment. They are areas that let us do the most good with everything that we have. I knew with my mind that these were the emphases we should continue.

And yet, my heart was pulled in another direction. Because, in the midst of my research on possible emphases, I came across a number. That number was 30,000 – the number of children under the age of five who died every day from preventable causes. At first, I thought that it had to be a mistake. ... I asked, how can it be possible? ... (all of President Lee's address may be found at www.rotary.org > events > convention ≥ 'Read the Speeches')

THEY PROFIT MOST WHO LAUGH BEST

Prosecutor: Did you kill the victim?

Defendant: No, I did not.

Prosecutor: Do you know what the penalty for perjury is?

Defendant: Yes, I do. And it's a heck of a lot better than the penalty for murder!

The best part about computers is that they make very fast, accurate mistakes.

"Are you a lawyer?"

"Yes."

"How much do you charge?"

"A hundred dollars for four questions."

"Isn't that awfully expensive?"

"Yes. What's your fourth question?"

Have a **joke too good** to keep to yourself? Email it to *The Hub*! bedawson@swbell.net

FOUNDATION FUNDERS

Our Funders for Next Week are

Randy Michero
Sam Miller
Jim Mills
Gerry Montgomery

Proposed New Member

A.J. Sheek, Sales

Proposed by
Jess Johnson
1st Publication

Happy Birthday!

Ed Fjordbak 7.19	Dick Crosby 7.21
Lilly Hogarth 7.20	Rod Pirtle 7.22
Hy Lyon 7.20	Tom Stollenwerck 7.23
Bill Siegel 7.20	John Young 7.24



CNC HOME CARE

(214) 540-5942
Established in 1994

Assisted Aging • Home Management • Social Activities

CHRISTIAN F. CHAUSEN, MBA, CMC, RG-NGF
ADMINISTRATOR

8111 Preston Road, Suite 415
Dallas, Texas 75225



Park Cities Dental Associates

3110 Webb Avenue
Suite 300
Dallas, Texas 75205
214-528-7870

Roy S. Washburn, D.D.S., F.A.G.D.
Philip E. Lindley, D.D.S.



From Our Factory to You
for Over 40 Years

ALAN WINN Corporate Counsel

2800 McCree Road
Garland, TX 75041
P.O. Box 462088
Garland, TX 75046
(800) 850-0321
Direct (972) 864-7326
FAX (972) 864-7312
e-mail:
arwinn@morganusa.com



VIRGINIA
COOK
REALTORS

Greg Pape

Broker Associate
Park Cities Office
5950 Sherry Lane, Suite 110
Dallas, Texas 75225
214.696.8877
Cell: 214.546.4066
Voicemail: 972.380.7885
Fax: 214.691.7779
gregpape@att.net



Quality Fence Company

8605 Sovereign Row
Dallas, Texas 75247
Wood Decks Overhead Structure
Wood Benches
All Types of Wood Fences
Chain Link

CHARLIE POLLAN
972-239-7201



Kathleen & Robert Ellington
4424 Lovers Lane • University Park, Texas 75225
214-691-2355



Bill Neathery

NEATHERY
ELECTRIC
Security Cameras
Home Theater
Computer/Data Services
Electrical & Lighting

www.neatheryelectric.com
214-691-8844



UP&OPEN IMAGING™
The Stand-Up™ MRI

1360 W. Campbell Rd., Suite 122 • Richardson, TX 75080
Ph. 972-479-9500 • Fax 972-479-9544
4144 N. Central Expressway, Suite 160 • Dallas, TX 75204
Ph. 214-828-1115 • Fax 214-828-9590
www.upandopenimaging.com

Rob Banes, CPA

WAGNER, EUBANK & NICHOLS, L.L.P.
Certified Public Accountants

The Berkshire at Preston Center
5950 Berkshire Lane, Suite 300
Dallas, Texas 75225
Ph: (214) 692-6800
Fax: (214) 692-7844
rbanes@wecnpc.com



E-mail: srothacker@uniqueac.com
Web site: www.uniqueac.com
1510 Stevens St. / Dallas, Texas 75218
TCLCA001398C

STEVE ROTHACKER

Phone: (214) 328-4189
Fax: (214) 328-0585
Cell: (214) 876-1250
Dallas, Texas 75218

WILLIAM L. SIEGEL
RICHARD BARRETT-CUETARA
ATTORNEYS AT LAW

COWLES & THOMPSON
A PROFESSIONAL CORPORATION

901 Main Street, Suite 4000
Dallas, Texas 75202
TEL 214.672.2000 FAX 214.672.2020

J. Marshall Weaver

CANNON
DEVELOPMENT, Z

4440 Sigma Road, Suite 101
Dallas, Texas 75244
(972) 239-1060
Fax (972) 934-8694
mweaver@cannoninc.net

FUGRO CONSULTANTS, INC.



2880 Virgo Lane
Dallas, Texas 75229
Phone: 972-484-8301
Fax: 972-620-7328
Email: rpatton@fugro.com

ROBERT S. PATTON, P.E.
Senior Consultant



**ROACH HOWARD
SMITH & BARTON**
...an Assurex Global Partner

Karen K. Farris, CPCU, ARM
President & CEO
kfarris@rshsb.com

Leroy Howard

Founder
lhoward@rshsb.com

8750 N Central Expressway Suite 500 Dallas, Texas 75231-6458
972-744-2701 Fax 972-231-1368 www.rshsb.com



Dennis Devenport
972.644.7676

www.astro-graphics.com

PRINTING

PUBLISHING

ADVERTISING

GRAPHIC DESIGN

neighborhood dining at its best
in Snider Plaza

Amore Italian
Peggy Sue BBQ
Cisco Grill

Marc and Susan Hall

A tradition of fine construction for over 25 years

New Homes • Renovations • Remodeling

Doug Means

214-363-9798



Making hardware easy.

DALLAS Plano Mesquite
Maple at Motor Colt at W. Park Kearney at Galloway
214-634-9900 972-312-0700 214-324-5067

NOW OPEN WEEKDAYS 8-8 • SATURDAY 9-5
Visit anytime at elliottshardware.com



SLEEPER SEWELL
Insurance Agents and Risk Managers
www.sleepersewell.com

972.419.7500

William E. Sleeper, President



RAYMOND L. GOODSON JR., INC.
CONSULTING ENGINEERS

David M. Goodson, P.E.
Stuart A. Markussen, P.E., R.P.L.S.

Suite 300, LB 17 • 5445 La Sierra • Dallas, Texas 75231-4138
214/739-8100 • Fax 214/739-6354



J. SCOTT SARGENT
Managing Director

Patriot Office
One Preston Centre
8222 Douglas Avenue, Suite 430
Dallas, TX 75225
phone: 214-265-7979 fax: 214-265-8109
mobile: 214-683-6419
e-mail: sargejs@swbell.net

We Gratefully Acknowledge



UP&OPEN IMAGING™
The Stand-Up™ MRI

1360 W. Campbell Rd., Suite 122 • Richardson, TX 75080
Ph. 972-479-9500 • Fax 972-479-9544

4144 N. Central Expressway, Suite 160 • Dallas, TX 75204
Ph. 214-828-1115 • 214-828-9590
www.upandopenimaging.com

for Supporting The Hub



COMMUNITIES
FOUNDATION
of TEXAS

*Bringing visionary philanthropists
and worthy causes together*

5500 CARUTH HAVEN LANE • DALLAS, TEXAS 75225
(214) 750-4222 • www.cftexas.org

ENTRUST CAPITAL ADVISORS

— Sellers Representation, Mergers & Acquisitions —

Dr. L. Nolan Duck, CBI
Partner

2425 N. Central Expressway, Suite 200 • Richardson, Texas 75080
Office 972.664.0400 • Cell 972.358.0321 • Fax 972.664.0401
NolanDuck@EntrustCap.com • www.EntrustCap.com



John Robertson
Sales Executive

Sales Center
Classic Residence by Hyatt
2727 Routh Street
Dallas, TX 75201

Telephone (214) 826-1234
JRobertson@hyattclassic.com
www.3000turtlecreek.com

Dr. Jack B. Marx

Therapeutic Optometrist

Examination & Treatment of Eye Disease
Eye Exams & Contact Lenses
Treatment of Red Eyes & Infections
LASIK & PRK Laser Evaluations

3302 N. Buckner Blvd., Suite 111
Dallas, Texas 75228

214-324-1100

Bob Dill

dd + 1.469.232.3824 c + 1.214.533.0939
e Bob_Dill@haygroup.com

Hay Group, Inc.
Suite 800 West | 5001 Spring Valley Road
Dallas, TX 75244-3190 | USA
t + 1.469.232.3800 | f + 1.469.232.3888
www.haygroup.com



HIERSCHE HAYWARD DRAKELEY URBACH

DREW N. BAGOT
Attorney at Law

15303 Dallas Parkway, Suite 700
Addison, Texas 75001

Phone: 972.701.7000 • Fax: 972.701.8765 • www.hhdulaw.com

Rob Eggemeyer, CPA, MBA
Vice President
Commercial Banking

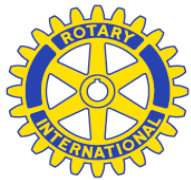


Compass Bank

6501 Hillcrest Ave.
Dallas, TX 75205
214-346-6169 / Fax 214-526-1131
Cell 214-532-5225
robert.eggemeyer@compassbank.com

**Thank You, for supporting the
Rotary Club of Park Cities.**

THE HUB The Rotary Club of Park Cities



www.parkcitiesrotary.org

Service
Above
Self

Leaders united worldwide to provide humanitarian service, encourage high ethical standards in all vocations, and help build goodwill and peace in the world.

July 25, 2008

TODAY'S PROGRAM

Program Chair of the Day: Mike Jarrell



New Member Speeches

RI's President Focuses on Growth and Diversity

Fast Facts about Rotary:

- World's first service club organization
- More than 1.2 million members in more than 200 countries
- More than 32,000 clubs worldwide
- More than 7,000 Rotaract Clubs in about 163 countries
- More than 10,700 Interact Clubs in 109 countries.

In his speech to the Rotary Club of Chicago, the birthplace of Rotary, Rotary International President Dong Kurn Lee stressed that a diverse Rotary is a strong Rotary. He stressed the need to bring in new leadership to take over for the old as part of the 2008-09 RI theme, *Make Dreams Real*.

"Every Rotarian that we bring into our clubs helps to *Make Dreams Real*," Lee said. "Every single one is another pair of hands, and another mind, and another heart to do Rotary's work."

Lee called on every district to increase membership by 10 percent and to add two clubs

during this Rotary year. "If we do not bring in younger members, we will miss out on a great deal of energy and expertise," he added. "And we will not be training a new generation of members to become club presidents, district governors, and senior RI leaders in the years to come."

Lee said that the membership of a healthy Rotary club is made up of men and women of different ages, vocations, professions, skills, and talents. A club that is not diversified is less able to conduct ambitious projects and has a narrower range of resources.

As part of the push for growth Lee asked Rotarians to

be creative in promoting membership and to expand their quest for new members. "There are many qualified professionals who may simply be overlooked because their professions are not typical for Rotary members," he said.

Lee has urged Rotarians to become involved in clean water, literacy, and health and hunger projects aimed at reducing child mortality. He also encouraged them to contribute to Rotary's US\$100 Million Challenge to eradicate polio. "We will *Make Dreams Real* by giving children hope and a chance at a future," Lee said.

ROTARY and POLIO



G8 Leaders Renew Commitments to Polio Eradication

At their 8-9 July summit meeting in Japan, leaders of the G8 nations agreed to "maintain momentum towards the historical achievement of eradicating polio."

To do so, their joint statement continued, "We will meet our previous commitments to maintain or increase financial contributions to support the Global Polio Eradication Initiative [GPEI], and encourage other public and private donors to do the same." Together, the G8 countries account

for over half of all funding of the GPEI. The initiative is led by the World Health Organization, **Rotary International**, the U.S. Centers for Disease Control and Prevention, and UNICEF.

The G8 first placed polio eradication on its summit agenda in 2002, and has renewed its commitment at every summit since then. In addition to



raising funds, G8 countries work to advocate broad support for ending polio. Advocacy by G8 leaders for the four remaining polio-endemic countries of Afghanistan, India, Nigeria, and Pakistan is critical to ensure eradication of the disease.

Following the G8's communiqué, the Gates Foundation stated, "In recognition of the G8's continued attention to polio eradication, the foundation will commit at least US\$150 million to fight polio this year. This is in addition to the \$250 million we have committed to date toward polio eradication."

LAST WEEK

Presiding: **Ley Waggoner**
 Invocation: **Charlotte Kroeker**
 Pledge/Song Leader: **E.G. McMillan**
 Introductions: **Mark Kashar**
 Sgt-at-Arms: **George Keeling**
 Photographer: **Phillip Bankhead**
 Chair of the Day: **Hal Copeland**
 Speaker: **Brad Sham**

President **Ley Waggoner** called the meeting to order. **Charlotte Kroeker** reported that **Karen Farris** has broken her leg, but **Karen** was present nonetheless. **E.G. McMillan** led us in singing "America." Retired Sgt-at-Arms **George Keeling** filled in today and showed he has not lost his touch by pulling in eight checks for the RCPC Foundation.

President **Ley** explained that **Mike Kelley** was not here today because he was at Habitat for Humanity where one of the homes ready for presentation had had the copper wire stripped out of it. When **Bill Neathery** found out what had happened, he volunteered the time of one of his electricians to help with the repairs.

Fred Brown announced our Attendance Awards which were topped this week by **Sam Montgomery** with eighteen years and **Doug Means** with twenty-five years of perfect attendance.

President-Elect **Phillip Bankhead** presented a check from the RCPC Foundation for \$3,300 to Trey Hill, Executive Director of Mercy Street. Trey explained that the money will be used for computers

for a reading lab they are creating in West Dallas. **Orville Salmon** presented our first new member of this year, PDG **Milton Kessel**, who is transferring from the Fair Park RC.

Hal Copeland introduced today's speaker broadcaster Brad Sham to update us on Cowboys football. Brad started with some of the innovations in the new stadium. One of them is the sixty yard wide, high-def TV that will be suspended from the rafters. There will be four end zone plazas, each of which will have a high-def TV screens. These TVs will revolutionize the experience of attending a game because they televise from all areas of the stadium which are not open to the networks. There will be a director, producer, and cameramen solely to broadcast on the TVs within the stadium. Because of the technology and access, it is unique in the world and will not only bring Super Bowl games to the DFW area, but may also be a contender to host World Cup Soccer.

Brad said that he is asked how the Cowboys will do this year, but he believes that it is all in the perception of the fans. Many fans do not believe a team has a good year unless they bring home the biggest trophy, and then they want to do it again. He believes that winning is not defined only by the biggest trophy, but that winning should be defined by having a good time at the game.

Thank you to Jack Kearney and all the Rotary Volunteers and Donors who made the Blood Drive a huge success!



Due to technical difficulties, pictures will return next week.



ROTARY HISTORY

Set the dial back to 1955 and the Rotary Golden Theater Radio Show, a series of radio dramas that Rotary produced for its 50th anniversary in 1955. The Rotary Global History Fellowship worked with RI's History and Archive staff to help Rotarians rediscover these episodes from the golden age of radio.

Members of the Old Time Radio Researchers Group digitized the original audiotapes. For more information, email RI's History and Archives. The Old Time Radio Researchers Group are volunteers from around the

world dedicated to preserving radio heritage.

Thirteen half-hour episodes were produced, covering a range of topics, including the founding of Rotary, its principal activities over the years, and its current projects.

In Episode 1, "The Golden Year," a reporter interviews the RI president at the time, Herbert J. Taylor, who is also the author of The Four-Way Test.

More episodes will be out soon.



Make Dreams Real
 Make A Difference

July 25, 2008 - Page 2

THE HUB

Newsletter of the
 Rotary Club of Park Cities (Dallas)
 Betty Dawson, *Editor*

Shutterbug Committee
 Jim Lilly, *Chair*

Bulletin/Internet Advertising
 K. Lonergan, M. Darnell, *Co-Chairs*

ROTARY CLUB



PARK CITIES

OFFICERS and DIRECTORS 2008-2009

Ley Waggoner, President
Phillip Bankhead, President Elect
Rick Amsberry, Vice President
Pam Carvey, Treasurer
Eric Heitkamp, Secretary
Mike Kelly, Sgt. at Arms
Cleve Clinton, Club Service I
Charlotte Hudgin, Club Service II
Dennis Devenport, Community Service I
Fred Brown, Community Service II
Leslie Martin-Hope, Vocational Service
Fred Speno, International Service
John Glancy, At Large
Linda Tunnell, Immediate Past President
Ben Young, Parliamentarian
Jodie Ray, Historian
Laurie Aldredge, Club Administrator

7557 Rambler Rd., Suite 700
 Dallas, Texas 75231

Office Phone: 214-739-4170

Office Fax: 214-739-2130

www.parkcitiesrotary.org

Email: club@parkcitiesrotary.org



Dong Kurn Lee, Seoul, Korea
President, Rotary International
www.rotary.org

L.B. Showalter, Plano
Governor, District 5810
www.rotary5810.org

UPCOMING PROGRAMS

July 25, 2008 - Page 3



August 1 Sharon Grigsby
"Dallas North and South"



August 8 L.B. Showalter
"District Governor Update"



August 15 Marques Hayes
"Basketball and Life"



August 22 Linda Holcomb
"Vocational Education"

CLUB ANNOUNCEMENTS

Dues Are Due! Please give your checks to Pam Carvey or to Laurie, or use the RCPC Website's **new** secure Online Payment Center.

Congratulations to Gerry and Barbara Montgomery on 50 yrs. of marriage!

Congratulations to Jamie Woodley's son Luke, a member of Troop 82, on earning his Eagle Scout.

Every Rotarian Every Year Contribute \$100 annually to the Rotary Foundation as a sustaining member.

Website Training July 30, 5:30
If you haven't been trained, sign up!

Record Your Make-ups Online
To record your meeting make-ups, go to ***Report Your Make-ups Here*** on the left side of the home page.

THOUGHTS ON...

Team Work

No one can whistle a symphony. It takes an orchestra to play it.

~ **Halford E. Luccock**

Many hands make light work.

~ **Greek saying**

One good turn deserves another

~ **Thomas Fuller**

He rises by lifting others.

~ **Robert G. Ingersoll**

Only those who respect the personality of others can be of real use to them.

~ **Albert Schweitzer**

People must help one another; it's nature's law.

~ **LaFontaine**

Cooperation: Doing what I tell you to do and doing it quick

~ **Elbert Hubbard**

AROUND OUR ROTARY WORLD

Rotarian in the right place at the right time after China quake

Honorary Rotarian Bill Chiang was working on his laptop the afternoon of May 12 when his 19th-floor apartment in Chengdu in China began to shake. A charter and honorary member of the Rotary Club of San Francisco Golden Gate (Chengdu does not have a club), he, along with members of the Rotary clubs of Beijing and Shanghai, has been an integral part of Rotary-related efforts to help victims of the earthquake in China's Sichuan Province.

Because of Rotarians' work, ShelterBox and LifeBox, two disaster relief organizations with Rotary ties,

have been able to ship aid containers to the region. ShelterBox was also able to obtain the visas required to send a disaster response team to the area.

"Bill has been great with on-the-ground organization, including providing access to interpreters, organizing transport, and all the paperwork," said Lasse Petersen, of the Rotary Club of Mounts Bay, Cornwall,

England, a longtime ShelterBox team member. Chiang, who has lived all over the world, has been in Chengdu for two years volunteering for organizations that provide reconstructive surgery to children.



THEY PROFIT MOST WHO LAUGH BEST

Son: "Dad, I'm going to a party. Would you do my homework for me?"

Dad: "I'm sorry, Son, but it just wouldn't be right."

Son: "Well, maybe not, but would you give it a try anyway?"

Onosecond: That miniscule fragment of time in which you realize that you have made a BIG mistake.

A computer is perfectly reliable until the moment you switch it on.

If you ate pasta and antipasta, would you still be hungry?

Political Asylum: Any governmental office.

Have a **joke** too **good** to keep to yourself? Email it to *The Hub*!
bedawson@swbell.net



Happy Birthday!

Terry Haskett 7.25
Jay Leask 7.25
Thad Smith 7.26
Marc Hall 7.29
Nancy S. Becker 7.31



FOUNDATION FUNDERS

Our Funders for Next Week are

Sam Montgomery
John Morelock
Tim Mullins
L.J. Murdock

Proposed New Member

A.J. Sheek, Sales

Proposed by
Jess Johnson

2nd Publication

CNC HOME CARE

(214) 540-5942
Established in 1994

Assisted Aging • Home Management • Social Activities

CHRISTIAN F. CHAUSEN, MBA, CMC, RG-NGF
ADMINISTRATOR

8111 Preston Road, Suite 415
Dallas, Texas 75225



Park Cities Dental Associates

3110 Webb Avenue
Suite 300
Dallas, Texas 75205
214-528-7870

Roy S. Washburn, D.D.S., F.A.G.D.
Philip E. Lindley, D.D.S.



From Our Factory to You
for Over 40 Years

ALAN WINN Corporate Counsel

2800 McCree Road
Garland, TX 75041
P.O. Box 462089
Garland, TX 75046
(800) 950-0321
Direct (972) 864-7326
FAX (972) 864-7312
e-mail:
arwinn@morganusa.com



VIRGINIA
COOK
REALTORS

Greg Pape

Broker Associate
Park Cities Office
5950 Sherry Lane, Suite 110
Dallas, Texas 75225
214.696.8877
Cell: 214.546.4066
Voicemail: 972.380.7885
Fax: 214.691.7779
gregpape@att.net



Quality Fence Company

8605 Sovereign Row
Dallas, Texas 75247
Wood Decks Overhead Structure
Wood Benches
All Types of Wood Fences
Chain Link

CHARLIE POLLAN
972-239-7201



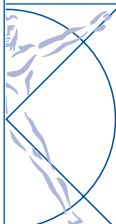
Kathleen & Robert Ellington
4424 Lovers Lane • University Park, Texas 75225
214-691-2355



Bill Neathery

NEATHERY
ELECTRIC
Security Cameras
Home Theater
Computer/Data Services
Electrical & Lighting

www.neatheryelectric.com
214-691-8844



UP&OPEN IMAGING™
The Stand-Up™ MRI

1360 W. Campbell Rd., Suite 122 • Richardson, TX 75080
Ph: 972-479-9500 • Fax 972-479-9544
4144 N. Central Expressway, Suite 160 • Dallas, TX 75204
Ph: 214-828-1115 • 214-828-9590
www.upandopenimaging.com

Rob Banes, CPA

WAGNER, EUBANK & NICHOLS, L.L.P.
Certified Public Accountants

The Berkshire at Preston Center
5950 Berkshire Lane, Suite 300
Dallas, Texas 75225
Ph: (214) 692-6800
Fax: (214) 692-7844
rbanes@wecnpc.com

Unique's **ONE HOUR**
AIR CONDITIONING & HEATING
Always On Time... Or You Don't Pay A Dime!
STEVE ROTHACKER
Phone: (214) 328-4189
Fax: (214) 328-0585
Cell: (214) 876-1250
1510 Stevens St. / Dallas, Texas 75218
E-mail: srothacker@uniqueac.com
Web site: www.uniqueac.com
TCLCA001398C

WILLIAM L. SIEGEL
RICHARD BARRETT-CUETARA
ATTORNEYS AT LAW

COWLES & THOMPSON
A PROFESSIONAL CORPORATION

901 Main Street, Suite 4000
Dallas, Texas 75202
TEL 214.672.2000 FAX 214.672.2020

J. Marshall Weaver

CANNON
DEVELOPMENT, Z

4440 Sigma Road, Suite 101
Dallas, Texas 75244
(972) 239-1060
Fax (972) 934-8694
mweaver@cannoninc.net

FUGRO CONSULTANTS, INC.



2880 Virgo Lane
Dallas, Texas 75229
Phone: 972-484-8301
Fax: 972-620-7328
Email: rpatton@fugro.com

ROBERT S. PATTON, P.E.
Senior Consultant



ROACH HOWARD
SMITH & BARTON
...an Assurex Global Partner

Karen K. Farris, CPCU, ARM
President & CEO
kfarris@rshsb.com

Leroy Howard
Founder
lhoward@rshsb.com

8750 N Central Expressway Suite 500 Dallas, Texas 75231-6458
972-744-2701 Fax 972-231-1368 www.rshsb.com



Dennis Devenport
972.644.7676

www.astro-graphics.com

PRINTING
PUBLISHING
ADVERTISING
GRAPHIC DESIGN

A tradition of fine construction for over 25 years
New Homes • Renovations • Remodeling

Doug Means

214-363-9798

ELLIOTT'S
HARDWARE

Making hardware easy.

DALLAS Plano Mesquite
Maple at Motor Colt at W. Park Kearney at Galloway
214-634-9900 972-312-0700 214-324-5067

NOW OPEN WEEKDAYS 8-8 • SATURDAY 9-5
Visit anytime at elliottshardware.com



SLEEPER SEWELL
Insurance Agents and Risk Managers
www.sleepersewell.com

972.419.7500

William E. Sleeper, President

RLG

RAYMOND L. GOODSON JR., INC.
CONSULTING ENGINEERS

David M. Goodson, P.E.
Stuart A. Markussen, P.E., R.P.L.S.

Suite 300, LB 17 • 5445 La Sierra • Dallas, Texas 75231-4138
214/739-8100 • Fax 214/739-6354

LandAmerica
Commonwealth Title

J. SCOTT SARGENT
Managing Director

Patriot Office
One Preston Centre
8222 Douglas Avenue, Suite 430
Dallas, TX 75225
phone: 214-265-7979 fax: 214-265-8109
mobile: 214-683-6419
e-mail: sargejs@swbell.net

We Gratefully Acknowledge

HIERSCHE HAYWARD DRAKELEY URBACH

DREW N. BAGOT

Attorney at Law

15303 Dallas Parkway, Suite 700

Addison, Texas 75001

Phone: 972.701.7000 • Fax: 972.701.8765 • www.hhdulaw.com

for Supporting The Hub



COMMUNITIES
FOUNDATION
of TEXAS

Bringing visionary philanthropists
and worthy causes together

5500 CARUTH HAVEN LANE • DALLAS, TEXAS 75225
(214) 750-4222 • www.cftexas.org

ENTRUST CAPITAL ADVISORS

— Sellers Representation, Mergers & Acquisitions —

Dr. L. Nolan Duck, CBI
Partner

2425 N. Central Expressway, Suite 200 • Richardson, Texas 75080
Office 972.664.0400 • Cell 972.358.0321 • Fax 972.664.0401
NolanDuck@EntrustCap.com • www.EntrustCap.com



John Robertson
Sales Executive

Sales Center
Classic Residence by Hyatt
2727 Routh Street
Dallas, TX 75201

Telephone (214) 826-1234
JRobertson@hyattclassic.com
www.3000turtlecreek.com

Dr. Jack B. Marx

Therapeutic Optometrist

Examination & Treatment of Eye Disease
Eye Exams & Contact Lenses
Treatment of Red Eyes & Infections
LASIK & PRK Laser Evaluations

3302 N. Buckner Blvd., Suite 111
Dallas, Texas 75228

214-324-1100

HayGroup®

Bob Dill

dd + 1.469.232.3824 c + 1.214.533.0939
e Bob_Dill@haygroup.com

Hay Group, Inc.
Suite 800 West | 5001 Spring Valley Road
Dallas, TX 75244-3190 | USA
t + 1.469.232.3800 | f + 1.469.232.3888
www.haygroup.com

HIERSCHE HAYWARD DRAKELEY URBACH

DREW N. BAGOT

Attorney at Law

15303 Dallas Parkway, Suite 700

Addison, Texas 75001

Phone: 972.701.7000 • Fax: 972.701.8765 • www.hhdulaw.com

Rob Eggemeyer, CPA, MBA
Vice President
Commercial Banking



Compass Bank

6501 Hillcrest Ave.
Dallas, TX 75205
214-346-6169 / Fax 214-526-1131
Cell 214-532-5225
robert.eggemeyer@compassbank.com

Thank You, for supporting the
Rotary Club of Park Cities.